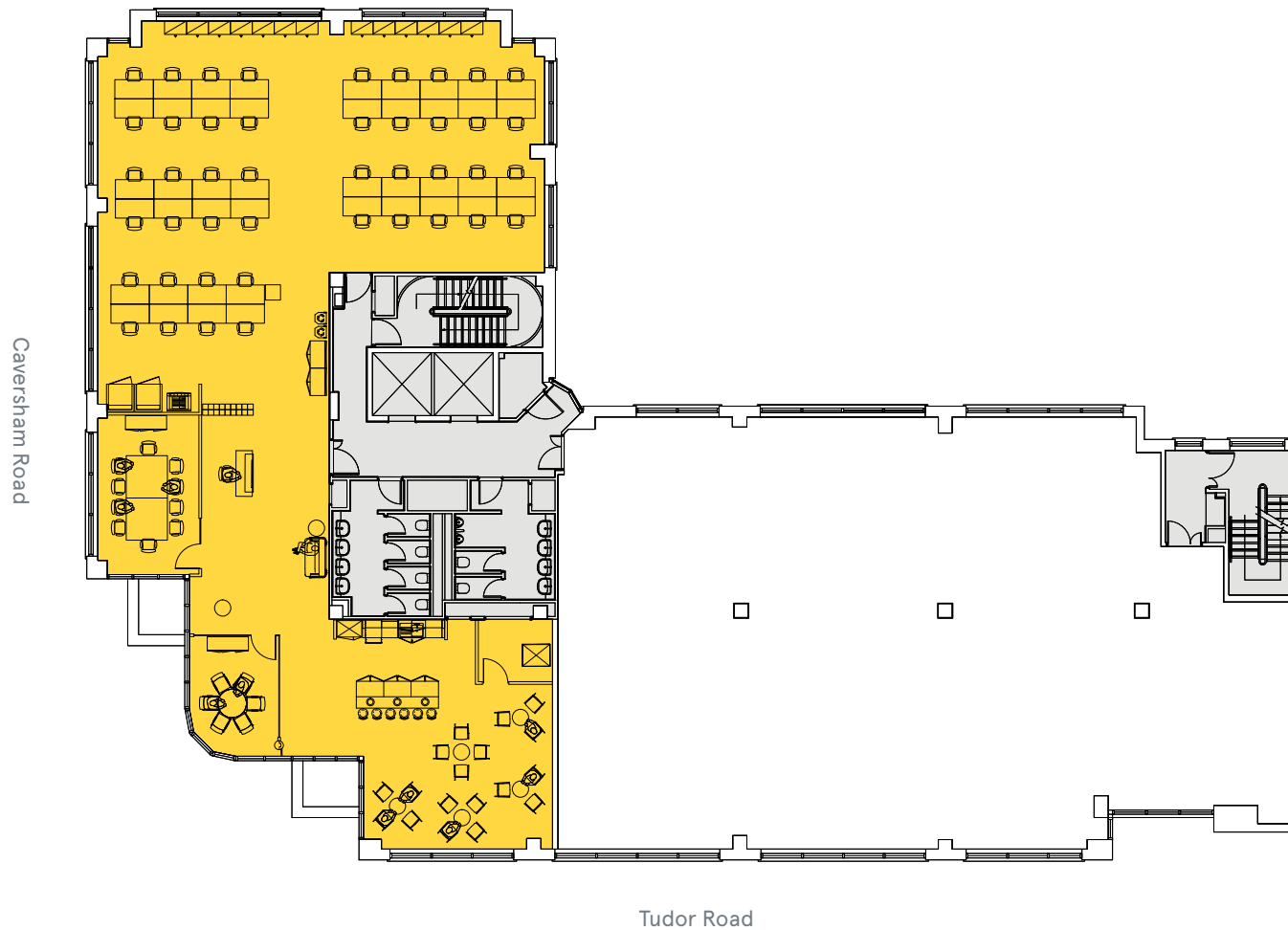


Part 5th floor 3,637 sq ft (337.9 sq m)



Open Plan Desks	44
10 person meeting room	1
6 person meeting room	1
Tea point	1
Breakout area	1
Phone booths	2

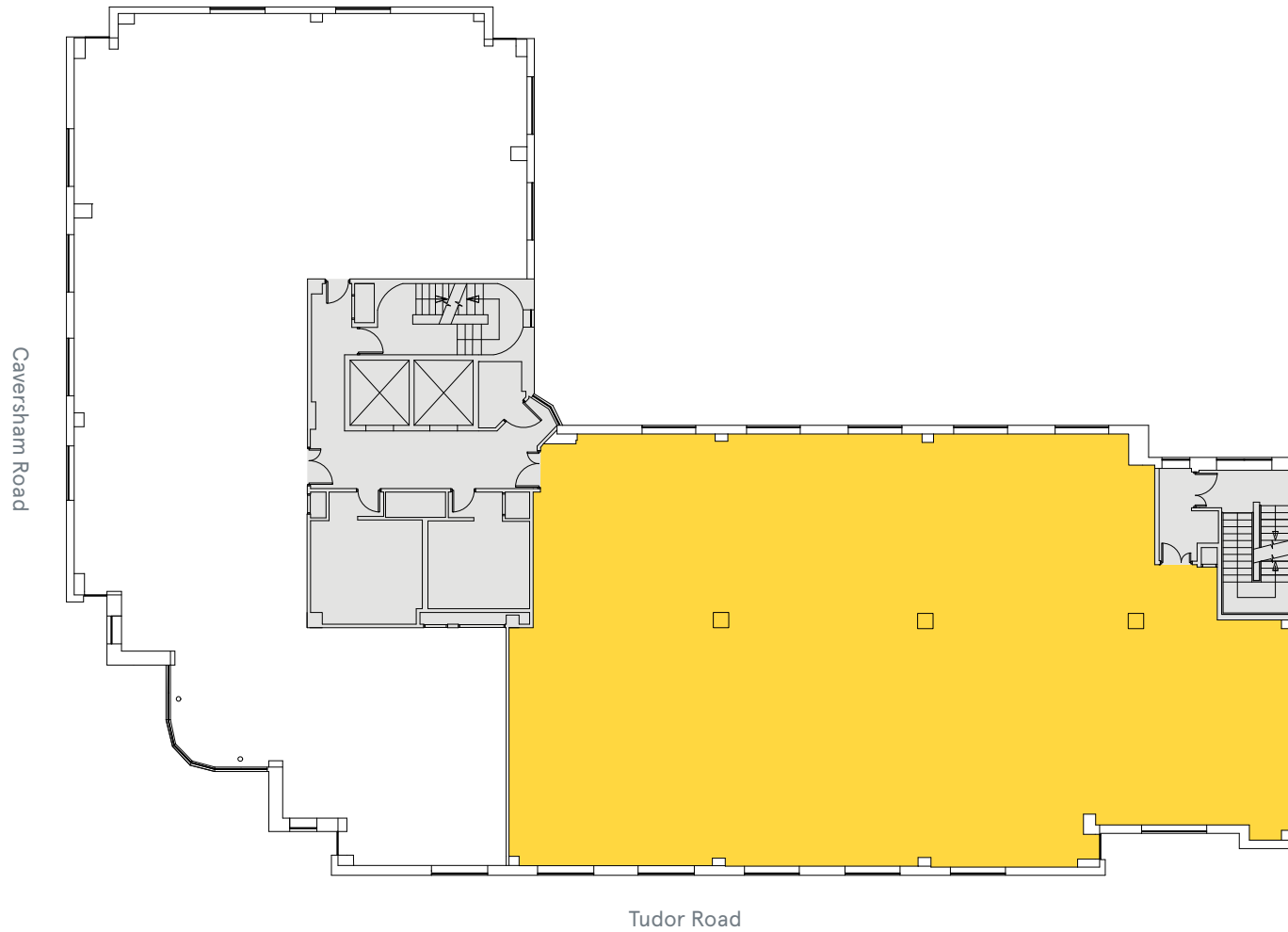
Total occupancy	44
Occupancy ratio	1:7.7 sq m

Available office Core

For indicative purposes only, not to scale.



Part 3rd floor 4,291 sq ft (398.6 sq m)

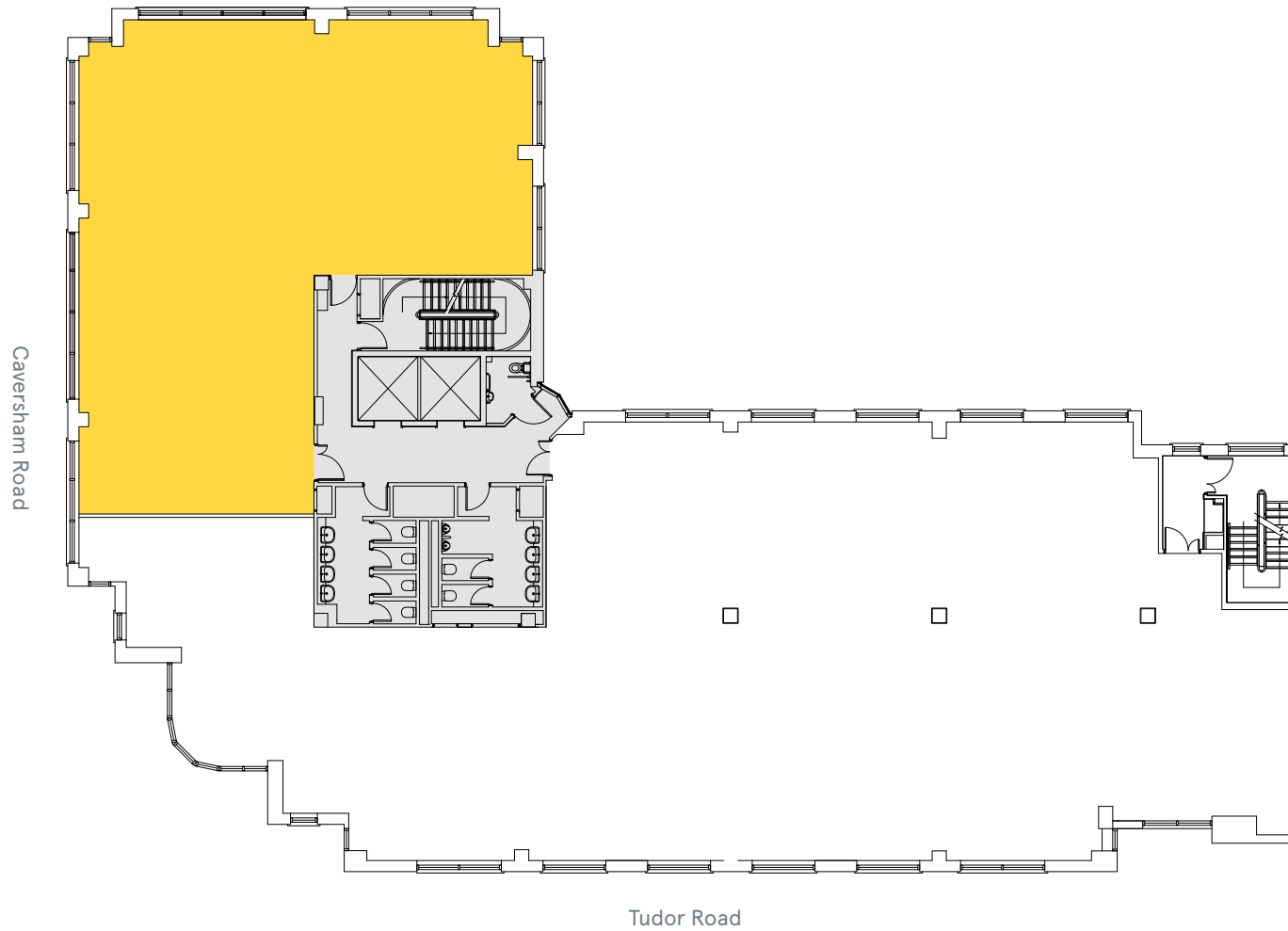


Available office Core

For indicative purposes only, not to scale.



Part 1st floor 2,406 sq ft (223.5 sq m)



Available office Core

For indicative purposes only, not to scale.

